

# **Appendix B**

## **Environmental Protection (Darling Range Bauxite Mining Proposals) Exemption Order 2023**

**Alcoa Monthly Report**  
**Clause 10**

February 2025



# Monthly Reporting Dashboard – Page 1





## Section 10 Monitoring Potential Drainage Incidents

Turbidity Data		Drainage Incidents	
Site	No. Active Monitors <sup>1</sup>	Site	No. Events (February-25) <sup>2</sup>
Huntly	39	Huntly	0
Willowdale	4	Willowdale	0
<b>Total</b>	<b>43</b>	<b>Total</b>	<b>0</b>

<sup>1</sup> Refers only to monitors located in areas covered by the Exemption Order.

<sup>2</sup> Potential Events - Currently being investigated in accordance with section 6(2) of the Exemption Order to determine whether any of the events were mining related.

## Section 2 – Clause 10 2(c) (i) Production and Exploration Summary

Production (HUN and WDL)	Month (Feb-25)	YTD (CY)	Limit	Status
Production Tonnes Huntly	1.4	2.7		
Production Tonnes Willowdale	0.9	1.8		
<b>Total Bauxite Production Tonnes</b>	<b>2.3</b>	<b>4.5</b>	<b>38 MT</b>	
Exploration	Month (Feb-25)	YTD (CY)	Limit	Status
<b>Total Exploration Holes</b>	<b>7,165</b>	<b>14,321</b>	<b>105,000</b>	

### Legend



Within Limit



Approaching Limit



Above Limit

## Section 3 Clause 10 2(c) (i) and Clause 10 2(c) (iii) Activities Summary and Forecast

Area	February 2025			March 2025			April 2025		
	*Cleared	Stabilised	Seeded	*Clearing	Stabilised	Seeded	*Clearing	Stabilised	Seeded
<b>Huntly</b>									
<b>Total HUN Mine Disturbance Footprint (ha)</b>	<b>14.8</b>	<b>11</b>	<b>92.9</b>	<b>26</b>	<b>90</b>	<b>160</b>	<b>15</b>	<b>90</b>	<b>193</b>
<b>Willowdale</b>									
<b>Total WDL mine disturbance footprint (ha)</b>	<b>0</b>	<b>5.6</b>	<b>33.5</b>	<b>0</b>	<b>0</b>	<b>58.4</b>	<b>0</b>	<b>0</b>	<b>94.9</b>

### Definitions

- Cleared – disturbance to native vegetation and other flora
- Stabilised– in relation to an area that has been disturbed, means carry out landscaping, ripping and other appropriate operations to prevent erosion of sediment, promote infiltration and manage surface water runoff
- Seeded – landform established and seeding complete

\* Clearing only considers completed hectares

# Monthly Reporting Dashboard – Page 2

## Section 4 – Clause 2(c) (ii) Activities Ceased during the Period for Huntly

Area	February 2025		
	Haul Roads <sup>(a)</sup>	Infrastructure <sup>(b)</sup>	Mining
Within 1km Reservoir (ha)	0	0	0
Serpentine Pipehead Dam Catchment (ha)	0	0	0
Within RPZ and >16% average slope (ha)	0	0	0
Within 10m of BC nesting/significant trees (ha)	0	0	0

### Definitions

**(a)** Haul roads includes road infrastructure

**(b)** Infrastructure Includes drainage control, mining and monitoring infrastructure

Maps for Huntly

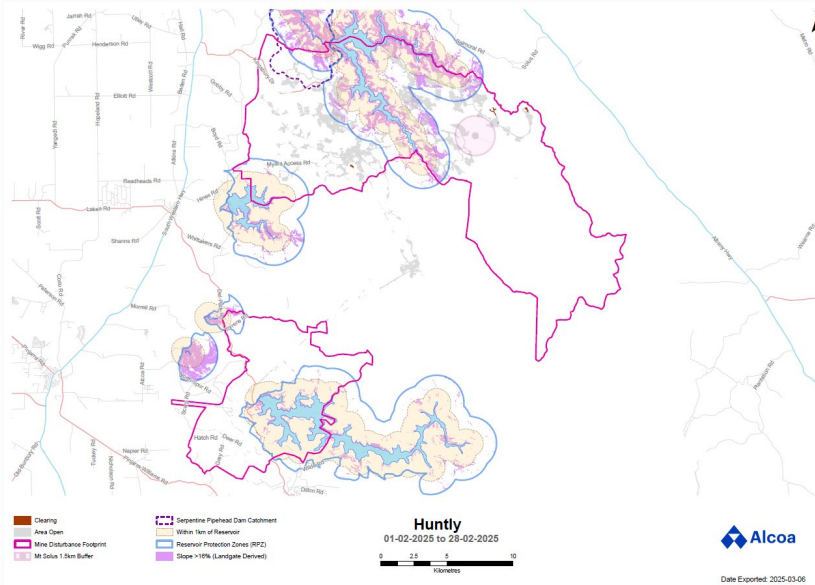
No cessation activities to report this month

Maps for Willowdale

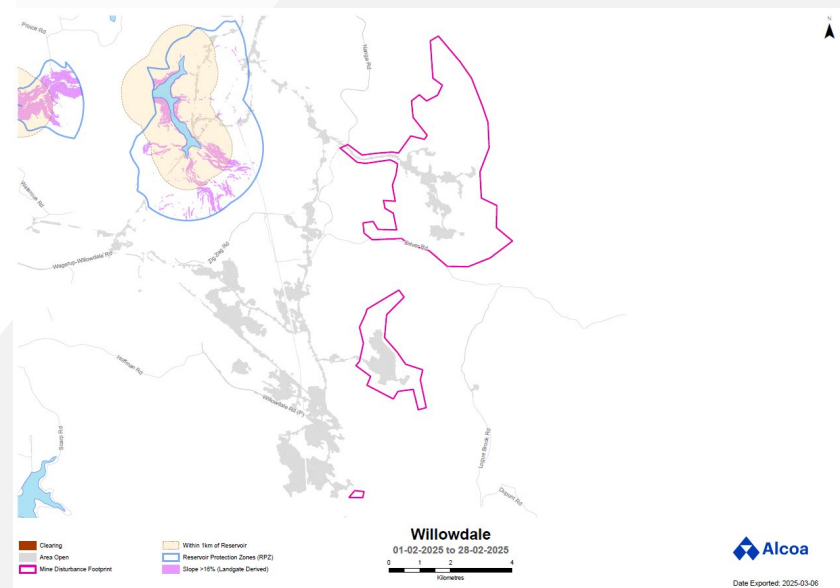
Cessation of mining activities in the above-mentioned areas is not applicable to the Willowdale mine

# Appendix A – Monitoring Results

Huntly

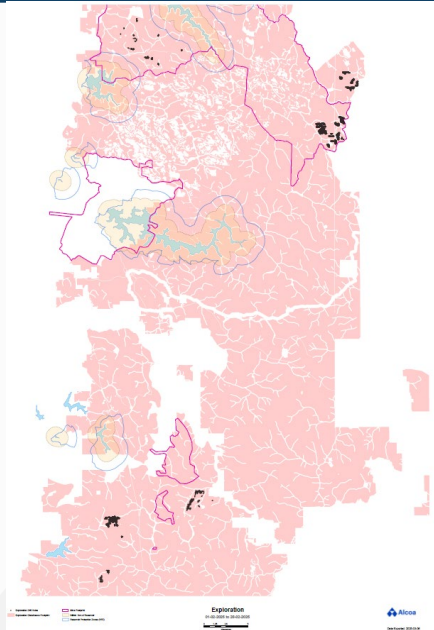


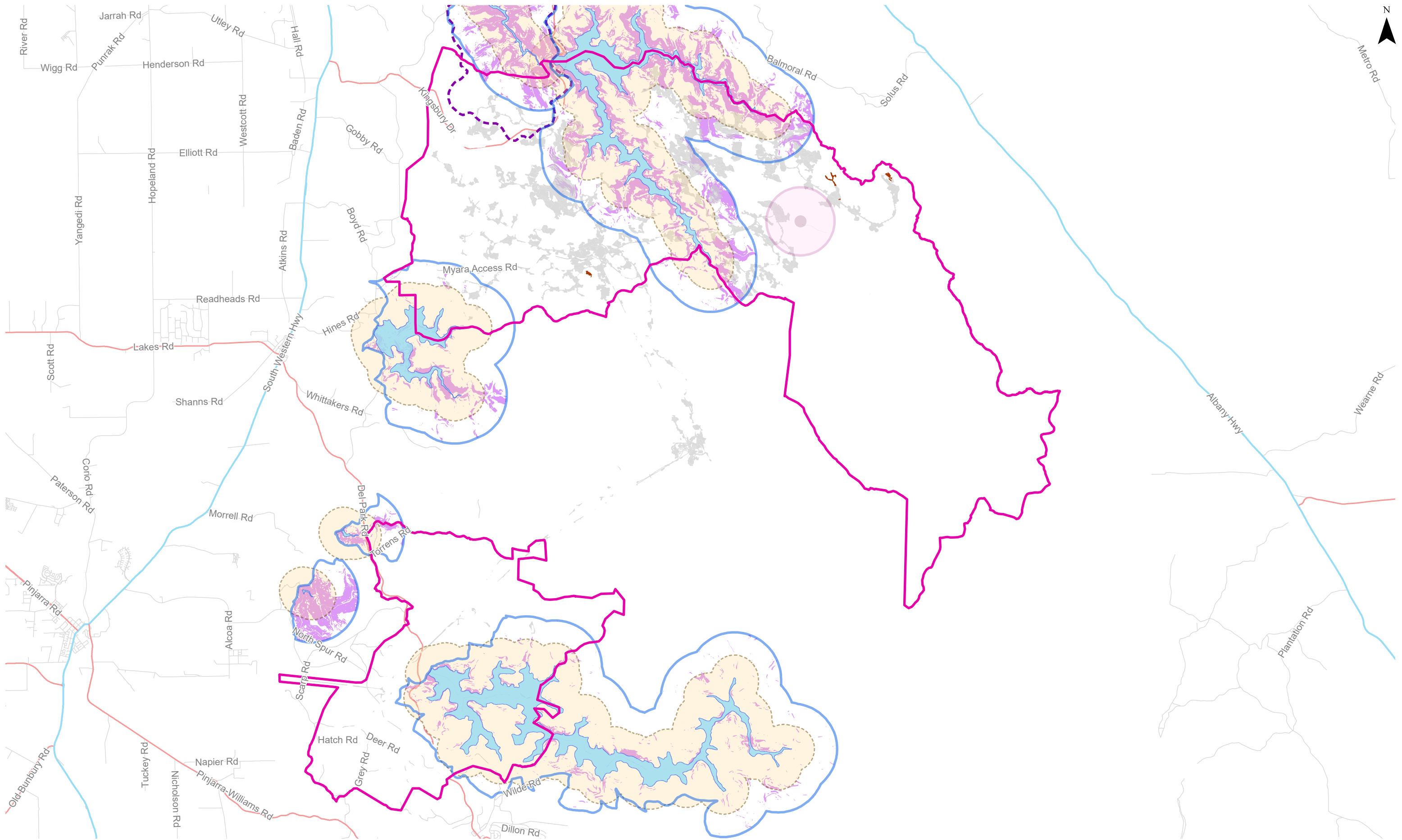
Willowdale











# Appendix A – Monitoring Results

## Exploration



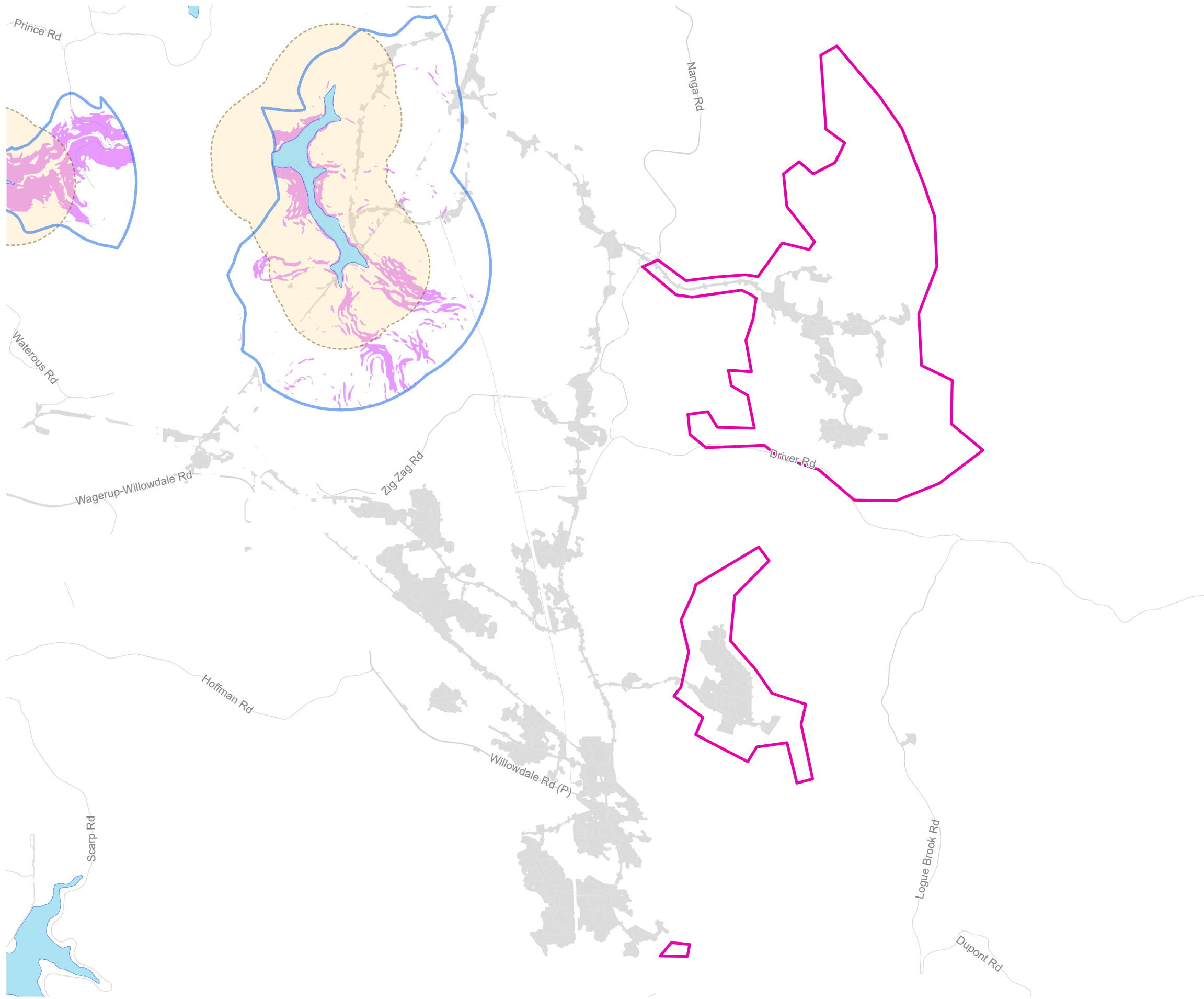



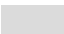

-  Clearing
-  Area Open
-  Mine Disturbance Footprint
-  Mt Solus 1.5km Buffer
-  Serpentine Pipehead Dam Catchment
-  Within 1km of Reservoir
-  Reservoir Protection Zones (RPZ)
-  Slope >16% (Landgate Derived)




**Huntly**  
01-02-2025 to 28-02-2025

0 2.5 5 10  
Kilometres





-  Clearing
-  Area Open
-  Mine Disturbance Footprint

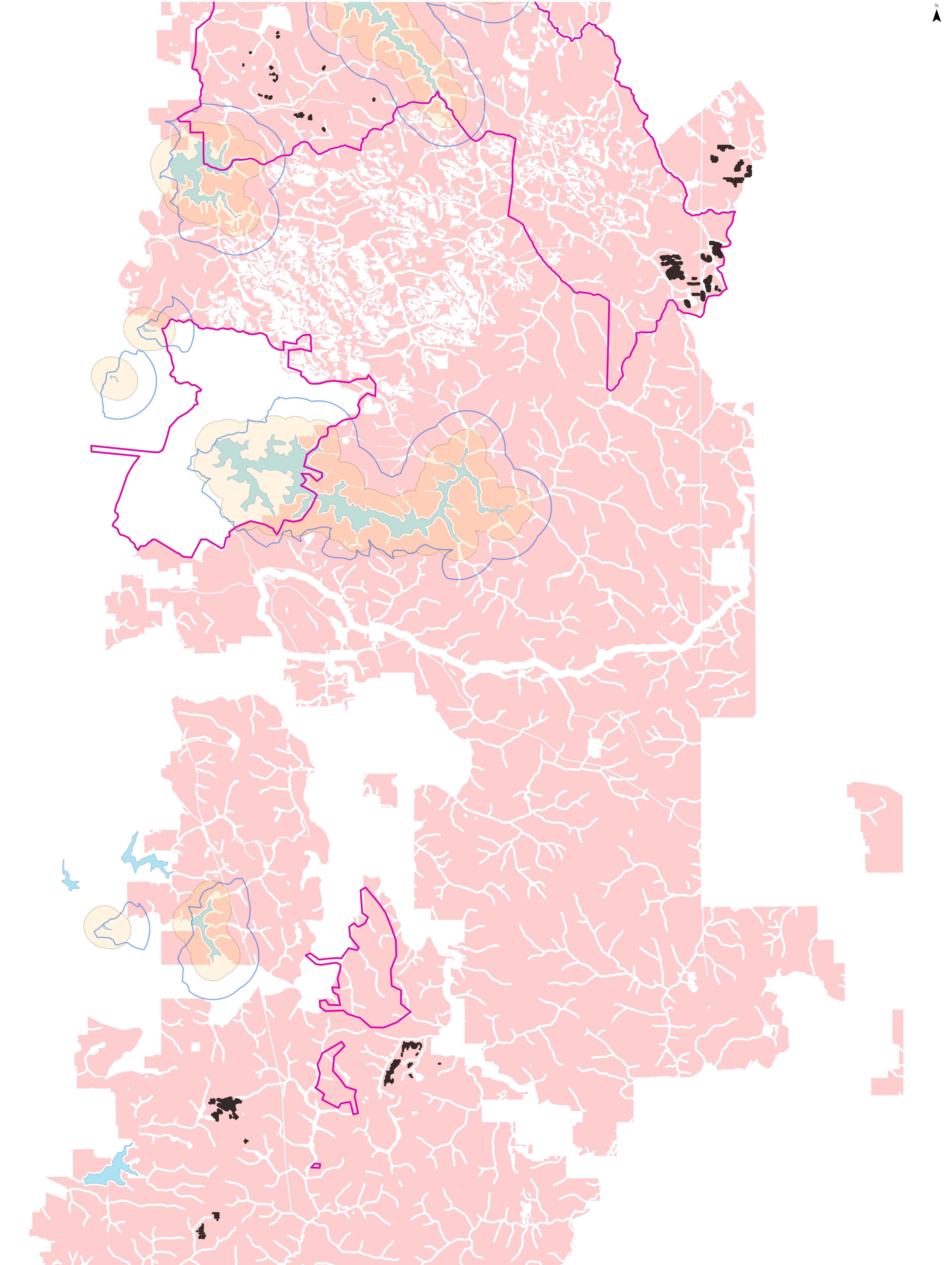
-  Within 1km of Reservoir
-  Reservoir Protection Zones (RPZ)
-  Slope >16% (Landgate Derived)

**Willowdale**  
**01-02-2025 to 28-02-2025**

0 1 2 4  
Kilometres







- Exploration Drill Holes
- Exploration Disturbance Footprint
- Mine Footprint
- Within 1km of Reservoir
- Reservoir Protection Zones (RPZ)

Exploration

01-02-2025 to 28-02-2025

01.252.55

Kilometres



Date Exported: 2025-03-06