

Environmental Protection (Darling Range Bauxite Mining Proposals) Exemption Order 2023

Alcoa Monthly Report

Clause 10

June 2025



Monthly Reporting Dashboard – Page 1

Section 10 Monitoring Potential Drainage Incidents

Turbidity Data		Drainage Incidents	
Site	No. Active Monitors ¹	Site	No. Events (Jun-25) ²
Huntly	39	Huntly	1
Willowdale	3	Willowdale	0
Total	42	Total	1

¹ Refers only to monitors located in areas covered by the Exemption Order.

² Potential Events - Currently being investigated in accordance with section 6(2) of the Exemption Order to determine whether any of the events were mining related.

Section 2 – Clause 10 2(c) (i) Production and Exploration Summary

Production (HUN and WDL)	Month (Jun-25)	YTD (CY)	Limit	Status
Production Tonnes Huntly	1.3	8.3		
Production Tonnes Willowdale	0.9	5.4		
Total Bauxite Production Tonnes	2.2	13.7	38 MT	
Exploration	Month (Jun-25)	YTD (CY)	Limit	Status
Total Exploration Holes	5,962	40,735	105,000	

Legend



Within Limit



Approaching Limit



Above Limit

Section 3 Clause 10 2(c) (i) and Clause 10 2(c) (iii) Activities Summary and Forecast

Area	June 2025			July 2025			August 2025		
	*Cleared	Stabilised	Seeded	*Clearing	Stabilised	Seeded	*Clearing	Stabilised	Seeded
Huntly									
Total HUN Mine Disturbance Footprint (ha)	14.3	0	0	15	0	0	20	0	0
Total WDL mine disturbance footprint (ha)	0	0	0	0	0	0	0	0	0

Definitions

- Cleared – disturbance to native vegetation and other flora
- Stabilised– in relation to an area that has been disturbed, means carry out landscaping, ripping and other appropriate operations to prevent erosion of sediment, promote infiltration and manage surface water runoff
- Seeded – landform established and seeding complete

* Clearing only considers completed hectares

Monthly Reporting Dashboard – Page 2

Section 4 – Clause 2(c) (ii) Activities Ceased during the Period for Huntly

Area	June 2025		
	Haul Roads ^(a)	Infrastructure ^(b)	Mining
Within 1km Reservoir (ha)	0	0	0
Serpentine Pipehead Dam Catchment (ha)	0	0	0
Within RPZ and >16% average slope (ha)	0	0	0
Within 10m of BC nesting/significant trees (ha)	0	0	0

Definitions

- (a) Haul roads includes road infrastructure
- (b) Infrastructure Includes drainage control, mining and monitoring infrastructure

Maps for Huntly

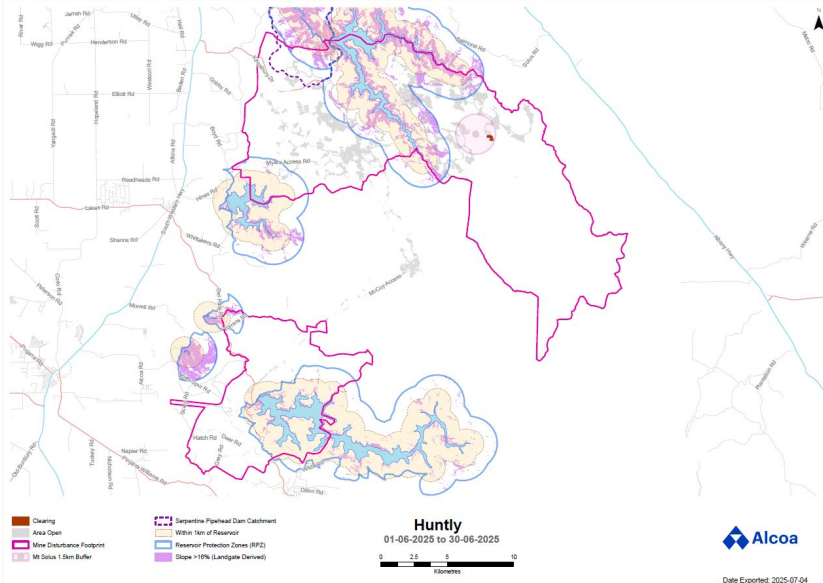
No cessation activities to report this month

Maps for Willowdale

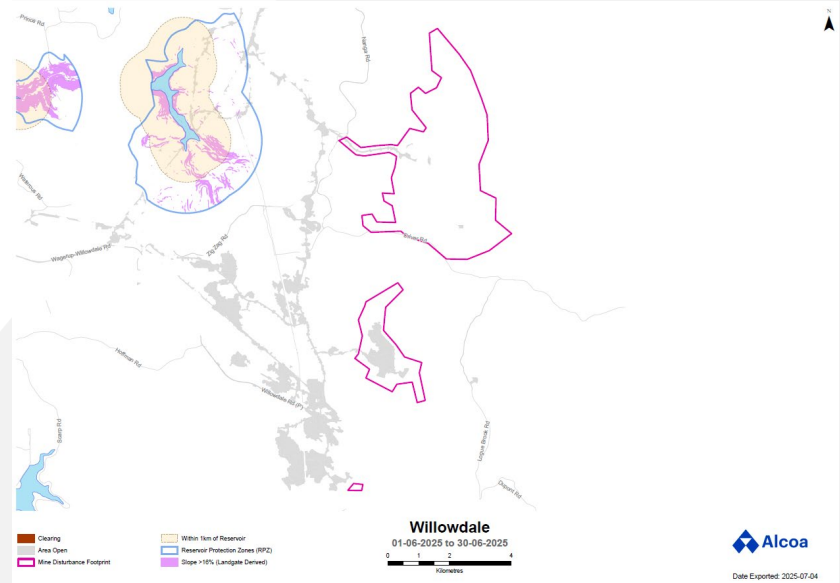
Cessation of mining activities in the above-mentioned areas is not applicable to the Willowdale mine

Appendix A – Monitoring Results

Huntly

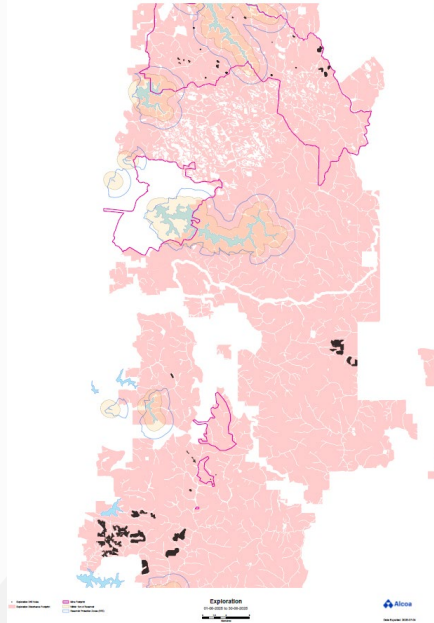


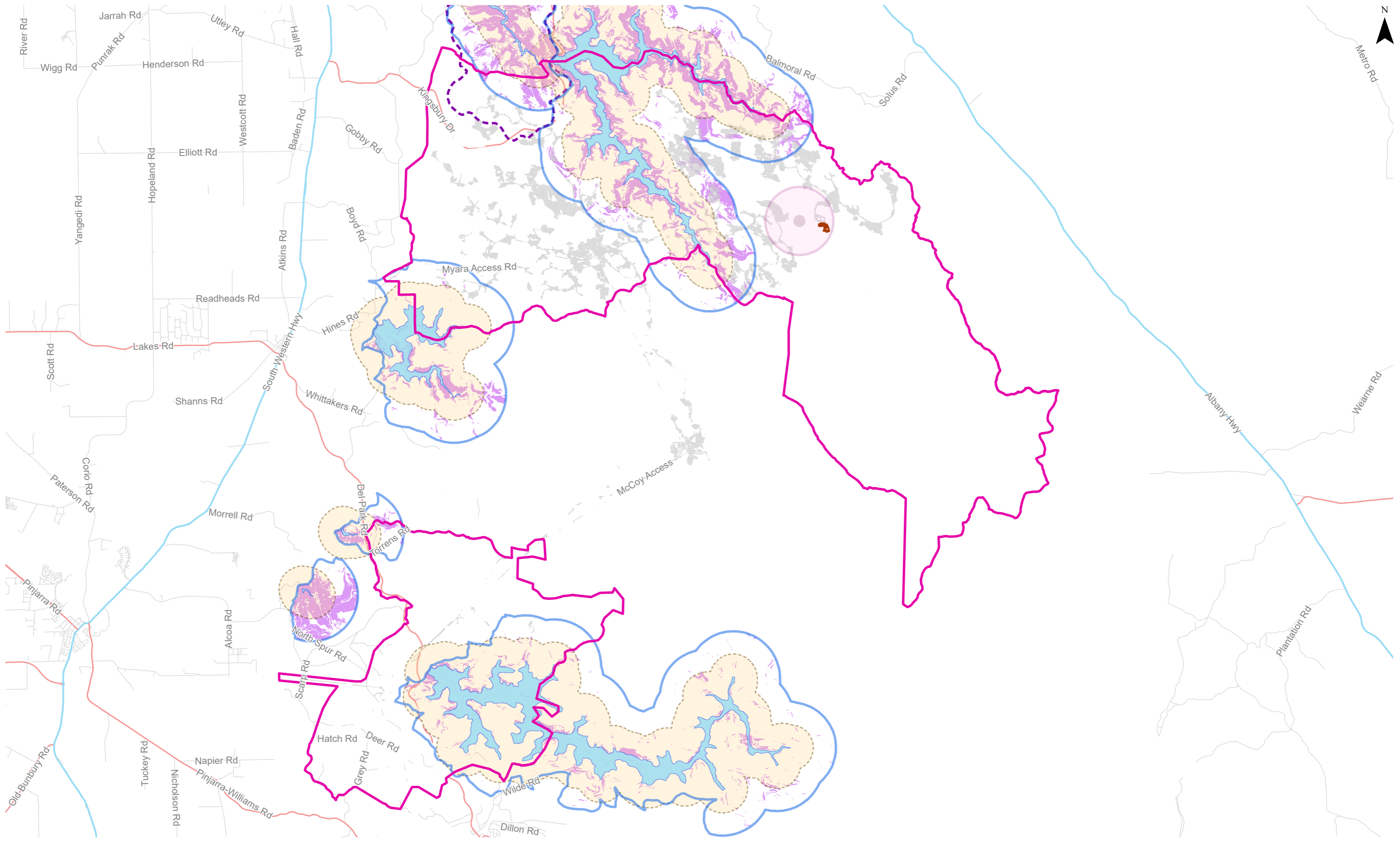
Willowdale



Appendix A – Monitoring Results

Exploration

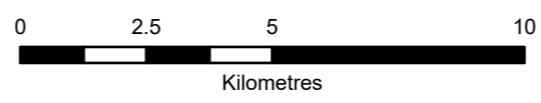


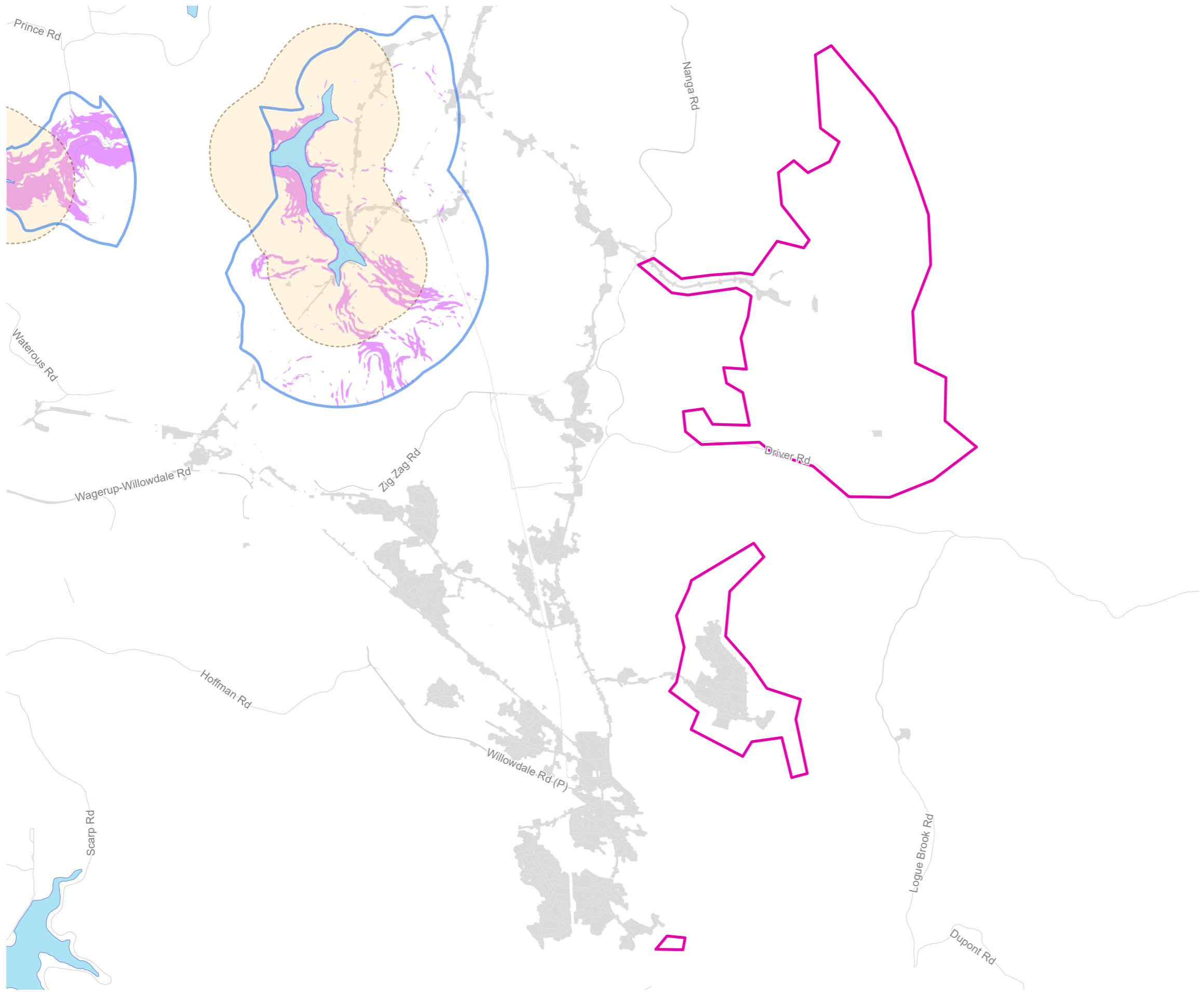


- Clearing
- Area Open
- Mine Disturbance Footprint
- Mt Solus 1.5km Buffer
- Serpentine Pipehead Dam Catchment
- Within 1km of Reservoir
- Reservoir Protection Zones (RPZ)
- Slope >16% (Landgate Derived)

Huntly

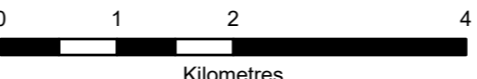
01-06-2025 to 30-06-2025





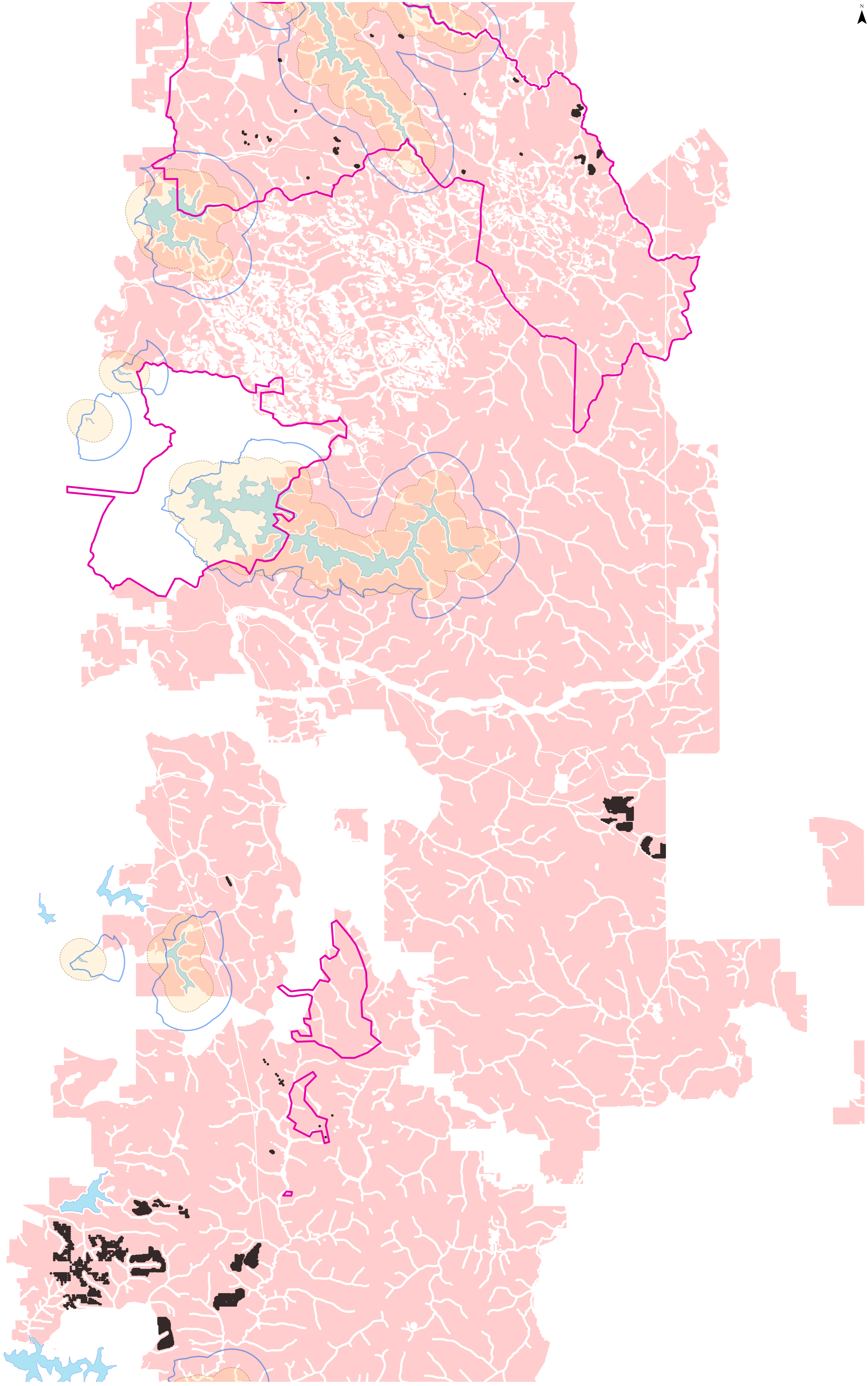
-  Clearing
-  Area Open
-  Mine Disturbance Footprint
-  Within 1km of Reservoir
-  Reservoir Protection Zones (RPZ)
-  Slope >16% (Landgate Derived)

Willowdale
01-06-2025 to 30-06-2025



0 1 2 4
Kilometres





- Exploration Drill Holes
- Exploration Disturbance Footprint
- Mine Footprint
- Within 1km of Reservoir
- Reservoir Protection Zones (RPZ)

Exploration
01-06-2025 to 30-06-2025

0 1.5 3 6
Kilometres

