

# **Environmental Protection (Darling Range Bauxite Mining Proposals) Exemption Order 2023**

**Alcoa Monthly Report  
Clause 10**

March 2024



# Monthly Reporting Dashboard – Page 1



## Section 1 – Clause 6 Drainage Incidents

Drainage Incidents		Turbidity Data		
Site	No. Events (Mar-24)	Site	No. Active Monitors	No. Events (Mar-24)
Huntly	0	Huntly	8	0
Willowdale	0	Willowdale	19	0
<b>Total</b>	<b>0</b>	<b>Total</b>	<b>27</b>	<b>0</b>

- Alcoa has provided the raw turbidity monitoring data to the CEO as required by Clause 10(2)(b) of the Environmental Protection (Darling Range Bauxite Mining Proposals) Exemption Order 2023. Publication of the raw data has been deferred.

## Section 2 – Clause 10 2(c) (i) Production and Exploration Summary

Production (HUN and WDL)	Month (Mar-24)	YTD (CY)	Limit	Status
Production Tonnes Huntly	2.1	5.7		
Production Tonnes Willowdale	0.9	2.5		
<b>Total Bauxite Production Tonnes</b>	<b>3.0</b>	<b>8.2</b>	<b>38 MT</b>	

Exploration	Month (Mar-24)	YTD (CY)	Limit	Status
<b>Total Exploration Holes</b>	<b>8,102</b>	<b>22,113</b>	<b>105,000</b>	

### Legend



Within Limit



Approaching Limit



Above Limit

## Section 3 Clause 10 2(c) (i) and Clause 10 2(c) (iii) Activities Summary and Forecast

Area	March 2024			April 2024			May 2024		
	*Cleared	Stabilised	Seeded	*Clearing	Stabilised	Seeded	*Clearing	Stabilised	Seeded
<b>Huntly</b>									
<b>Total HUN Mine Disturbance Footprint (ha)</b>	<b>0</b>	<b>40.8</b>	<b>120.2</b>	<b>0</b>	<b>6.6</b>	<b>144.1</b>	<b>0</b>	<b>0</b>	<b>46.3</b>
<b>Willowdale</b>									
<b>Total WDL mine disturbance footprint (ha)</b>	<b>0</b>	<b>0</b>	<b>17.2</b>	<b>0</b>	<b>0</b>	<b>40.0</b>	<b>0</b>	<b>0</b>	<b>29.6</b>

### Definitions

- Cleared – disturbance to native vegetation and other flora
- Stabilised– in relation to an area that has been disturbed, means carry out landscaping, ripping and other appropriate operations to prevent erosion of sediment, promote infiltration and manage surface water runoff
- Seeded – landform established and seeding complete

\* Clearing only considers completed hectares

# Monthly Reporting Dashboard – Page 2



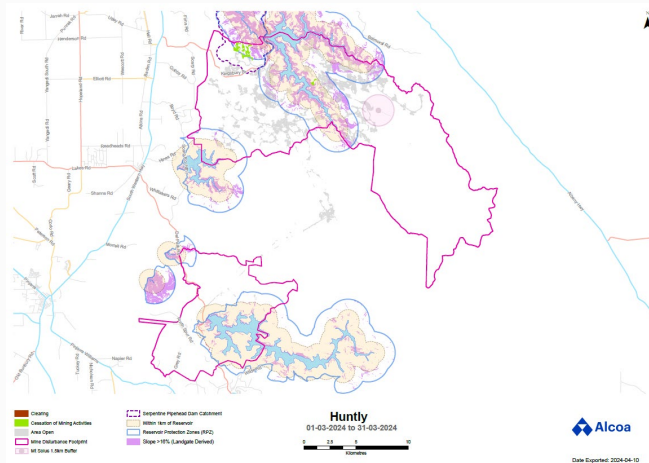
## Section 4 – Clause 2(c) (ii) Activities Ceased during the Period for Huntly

Area	March 2024		
	Haul Roads (a)	Infrastructure (b)	Mining
Within 1km Reservoir (ha)	3.6	0	6.5
Serpentine Pipehead Dam Catchment (ha)	8.4	0	89.1
Within RPZ and >16% average slope (ha)	0	0	0
Within 10m of BC nesting/significant trees (ha)	0	0	0

### Definitions

- (a) Haul roads includes road infrastructure
- (b) Infrastructure Includes drainage control, mining and monitoring infrastructure

### Maps for Huntly



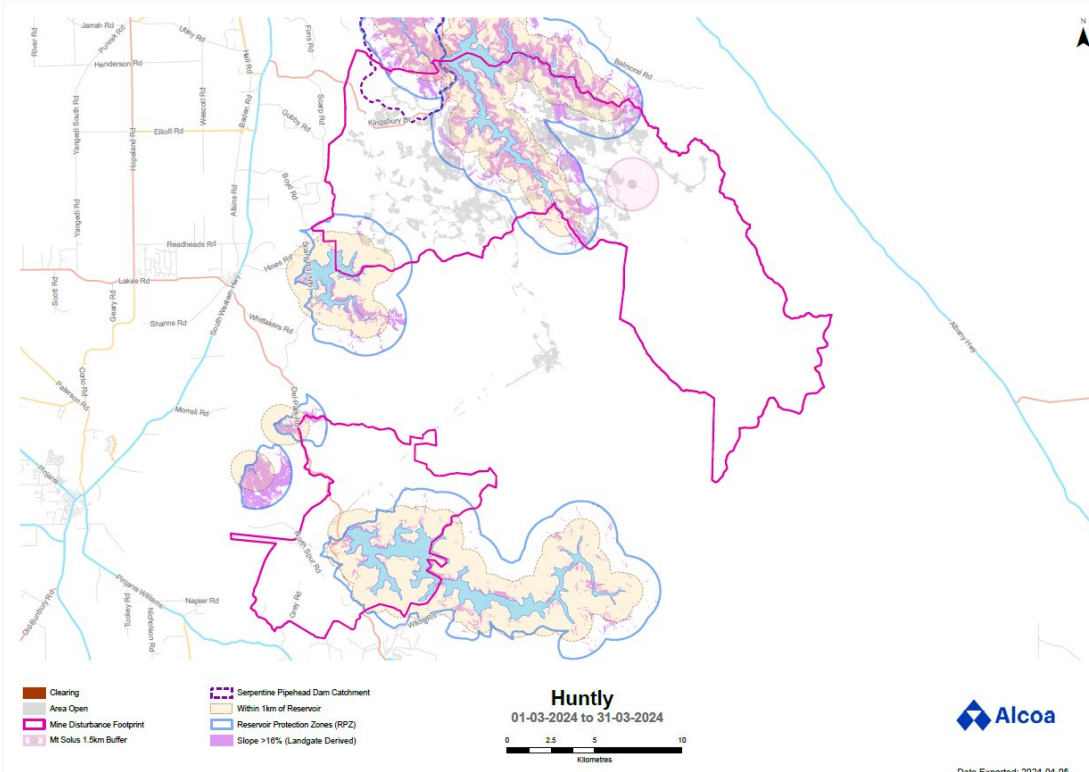
### Maps for Willowdale

Cessation of mining activities in the above-mentioned areas is not applicable to the Willowdale mine

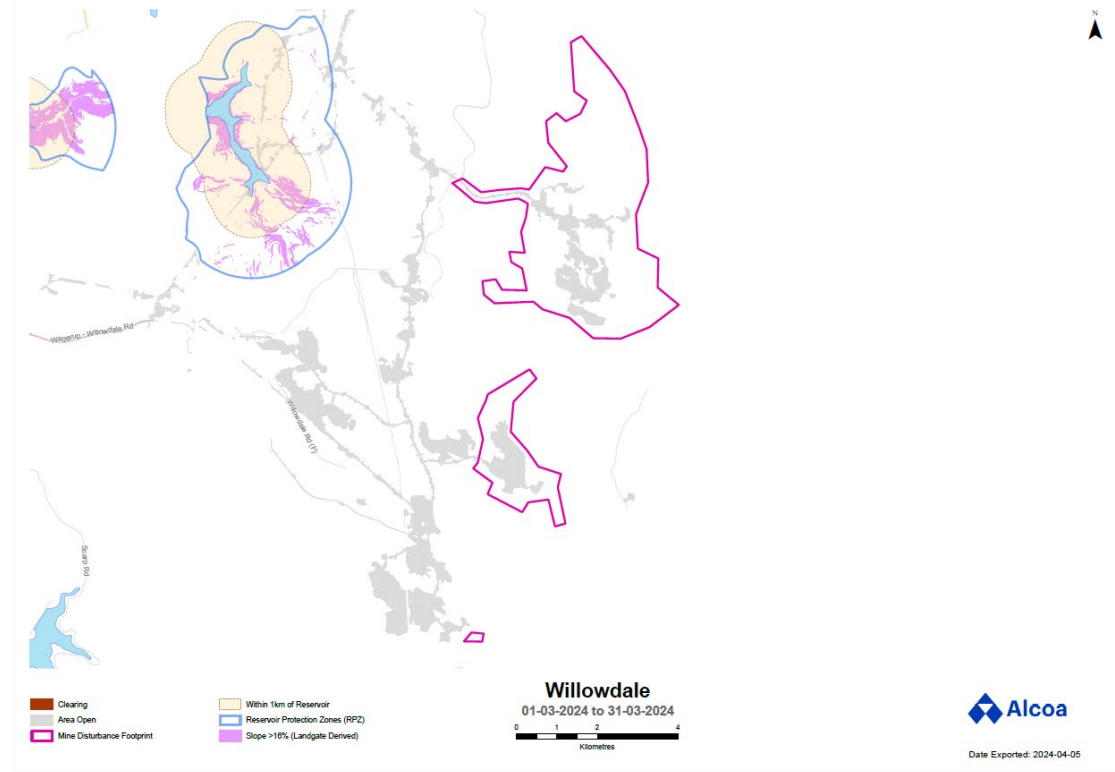
# Appendix A – Monitoring Results



## Huntly



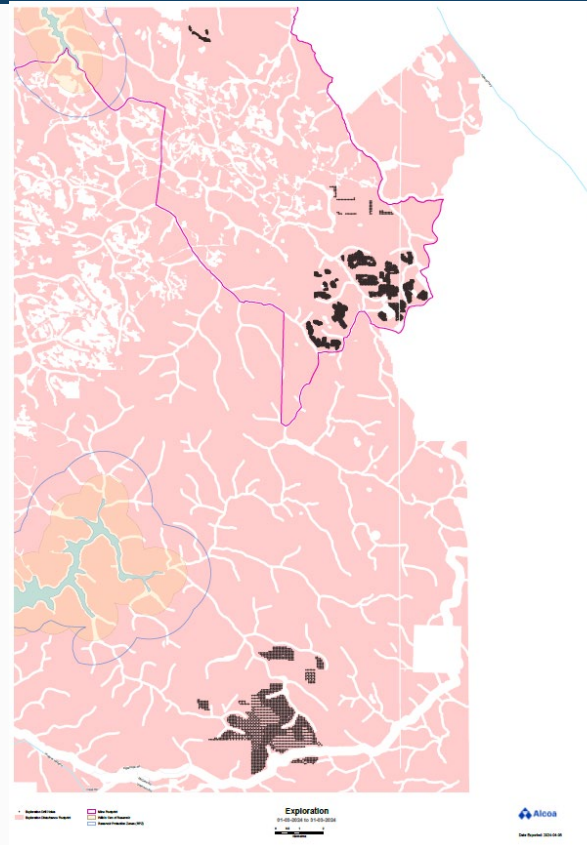
## Willowdale

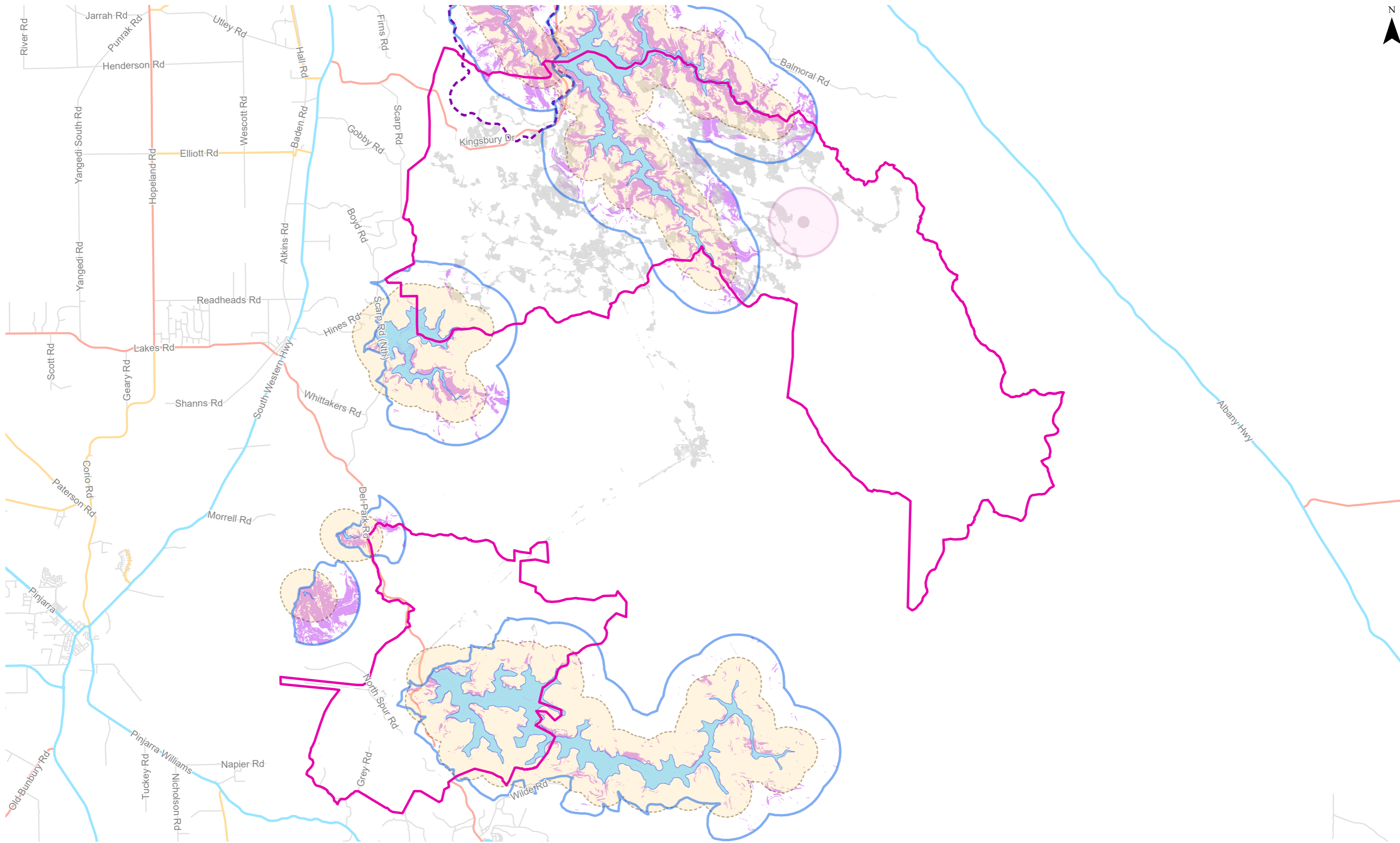


# Appendix A – Monitoring Results



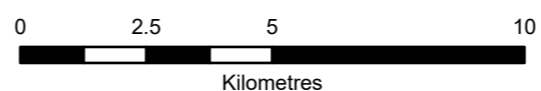
## Exploration



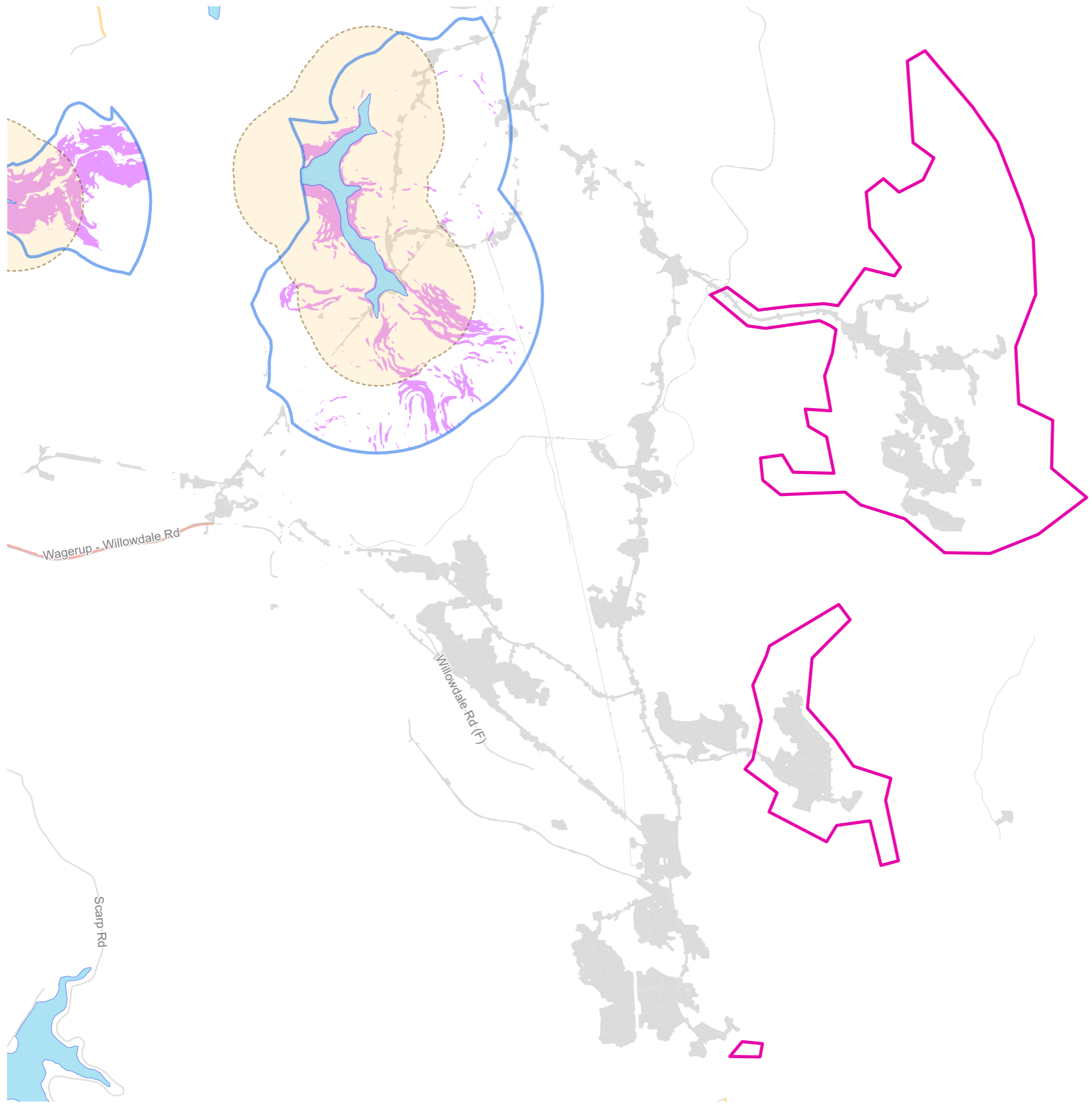


- Clearing
- Area Open
- Mine Disturbance Footprint
- Mt Solus 1.5km Buffer
- Serpentine Pipehead Dam Catchment
- Within 1km of Reservoir
- Reservoir Protection Zones (RPZ)
- Slope >16% (Landgate Derived)

**Huntly**  
01-03-2024 to 31-03-2024







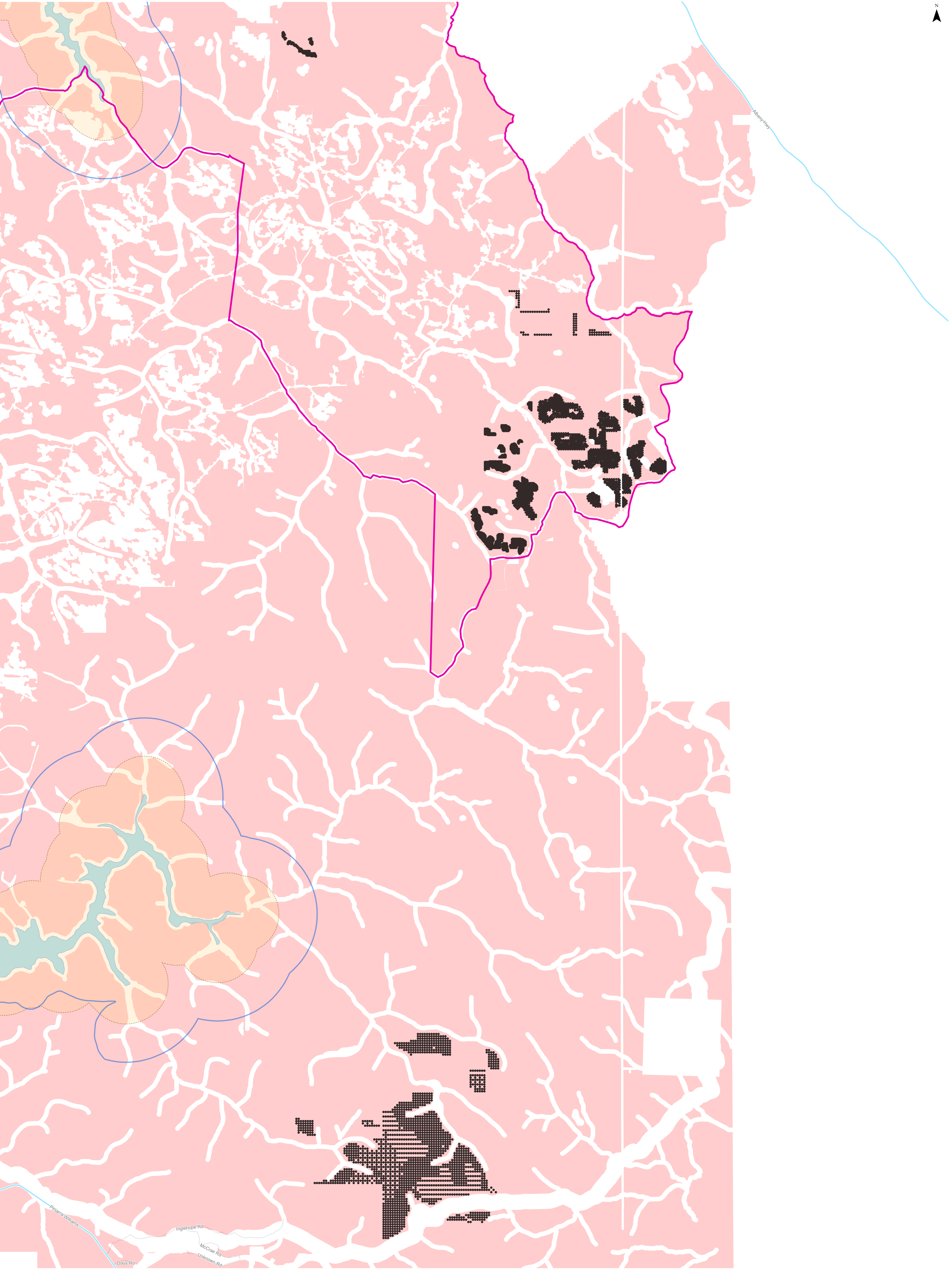
- Clearing
- Area Open
- Mine Disturbance Footprint

- Within 1km of Reservoir
- Reservoir Protection Zones (RPZ)
- Slope >16% (Landgate Derived)

**Willowdale**  
01-03-2024 to 31-03-2024

Kilometres





- Exploration Drill Holes
- Mine Footprint
- Exploration Disturbance Footprint
- Within 1km of Reservoir
- Reservoir Protection Zones (RPZ)

**Exploration**  
01-03-2024 to 31-03-2024

