

# **Environmental Protection (Darling Range Bauxite Mining Proposals) Exemption Order 2023**

## **Alcoa Monthly Report Clause 10**

October 2024



# Monthly Reporting Dashboard – Page 1



## Section 10 Monitoring Potential Drainage Incidents

Turbidity Data		Drainage Incidents	
Site	No. Active Monitors <sup>1</sup>	Site	No. Events (October-24) <sup>2</sup>
Huntly	41	Huntly	0
Willowdale	4	Willowdale	0
<b>Total</b>	<b>45</b>	<b>Total</b>	<b>0</b>

<sup>1</sup> Refers only to monitors located areas covered by the Exemption Order.

<sup>2</sup> Potential Events - Currently being investigated in accordance with section 6(2) of the Exemption Order to determine whether any of the events were mining related.

## Section 2 – Clause 10 2(c) (i) Production and Exploration Summary

Production (HUN and WDL)	Month (Oct-24)	YTD (CY)	Limit	Status
Production Tonnes Huntly	1.4	16.8		
Production Tonnes Willowdale	0.9	8.5		
<b>Total Bauxite Production Tonnes</b>	<b>2.3</b>	<b>25.3</b>	<b>38 MT</b>	

Exploration	Month (Oct-24)	YTD (CY)	Limit	Status
<b>Total Exploration Holes</b>	<b>2,824</b>	<b>55,486</b>	<b>105,000</b>	

### Legend



Within Limit



Approaching Limit



Above Limit

## Section 3 Clause 10 2(c) (i) and Clause 10 2(c) (iii) Activities Summary and Forecast

Area	October 2024			November 2024			December 2024		
	*Cleared	Stabilised	Seeded	*Clearing	Stabilised	Seeded	*Clearing	Stabilised	Seeded
<b>Huntly</b>									
<b>Total HUN Mine Disturbance Footprint (ha)</b>	<b>19.48</b>	<b>16.25</b>	<b>0</b>	<b>25</b>	<b>26</b>	<b>0</b>	<b>20</b>	<b>60</b>	<b>67</b>
<b>Total WDL mine disturbance footprint (ha)</b>	<b>0</b>	<b>1.98</b>	<b>0</b>	<b>0</b>	<b>0</b>	<b>0</b>	<b>0</b>	<b>0</b>	<b>0</b>

### Definitions

- Cleared – disturbance to native vegetation and other flora
- Stabilised– in relation to an area that has been disturbed, means carry out landscaping, ripping and other appropriate operations to prevent erosion of sediment, promote infiltration and manage surface water runoff
- Seeded – landform established and seeding complete

\* Clearing only considers completed hectares

# Monthly Reporting Dashboard – Page 2



## Section 4 – Clause 2(c) (ii) Activities Ceased during the Period for Huntly

Area	October 2024			<b>Definitions</b> (a) Haul roads includes road infrastructure (b) Infrastructure Includes drainage control, mining and monitoring infrastructure
	Haul Roads <sup>(a)</sup>	Infrastructure <sup>(b)</sup>	Mining	
Within 1km Reservoir (ha)	0	0	0	
Serpentine Pipehead Dam Catchment (ha)	0	0	0	
Within RPZ and >16% average slope (ha)	0	0	0	
Within 10m of BC nesting/significant trees (ha)	0	0	0	

**Maps for Huntly**

No cessation activities to report this month

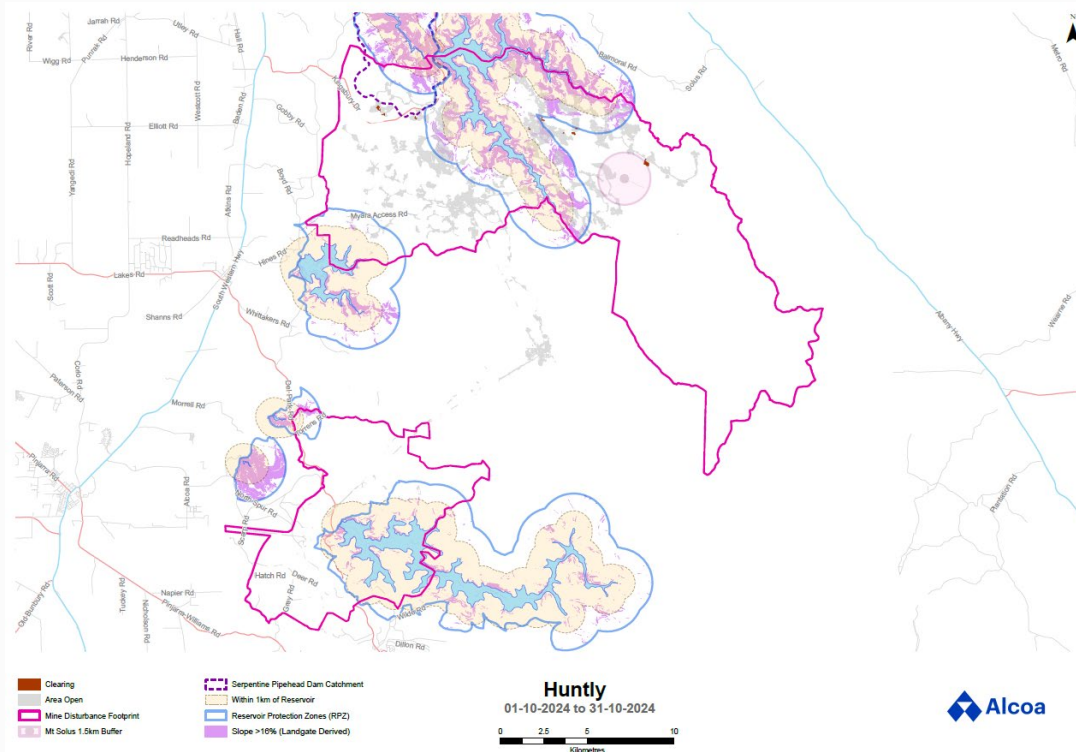
**Maps for Willowdale**

Cessation of mining activities in the above-mentioned areas is not applicable to the Willowdale mine

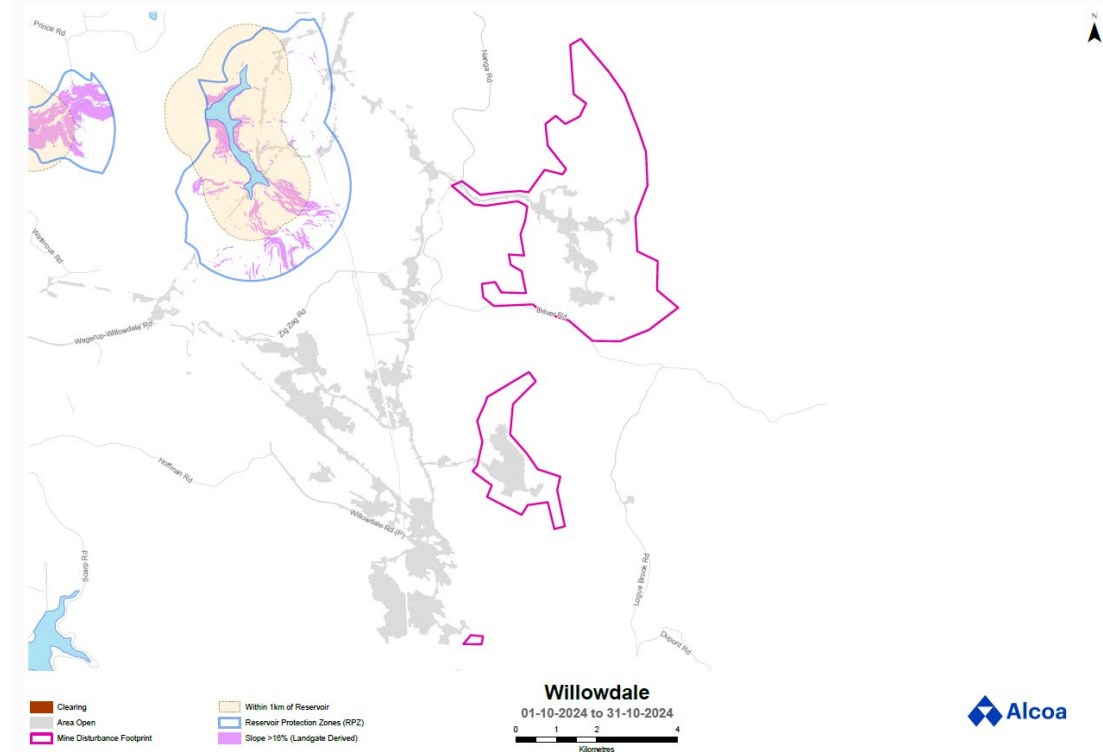
# Appendix A – Monitoring Results



## Huntly

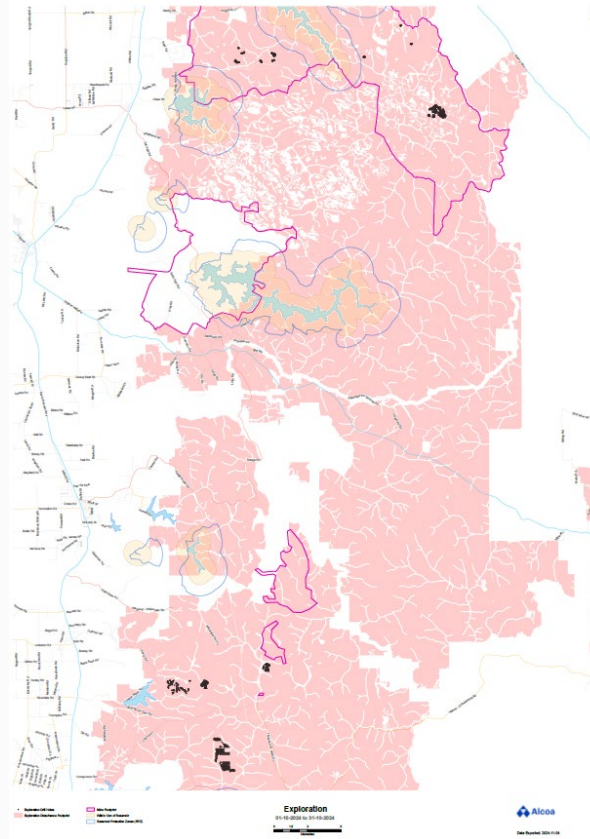


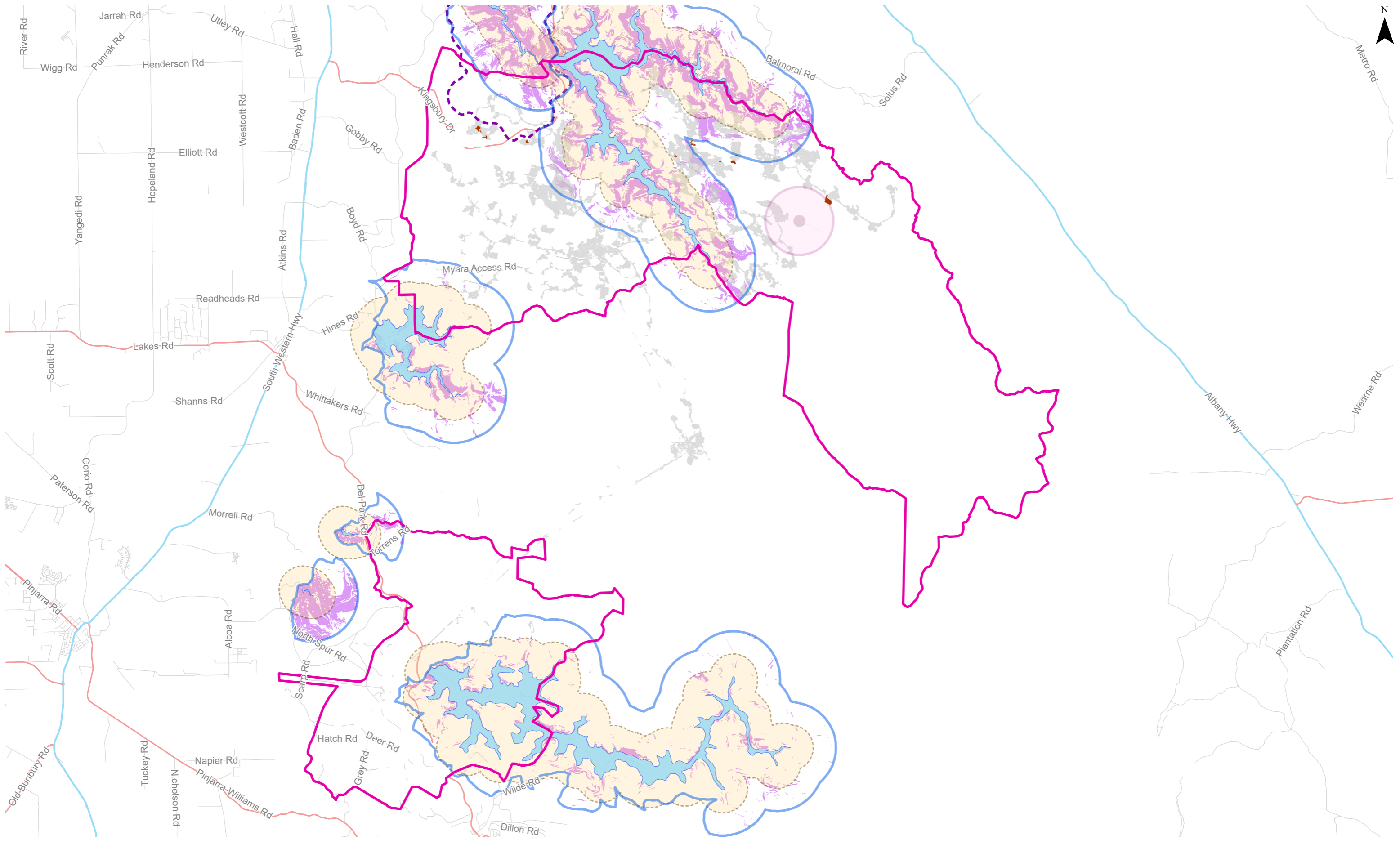
## Willowdale



# Appendix A – Monitoring Results

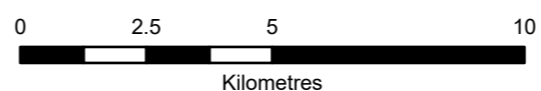
## Exploration

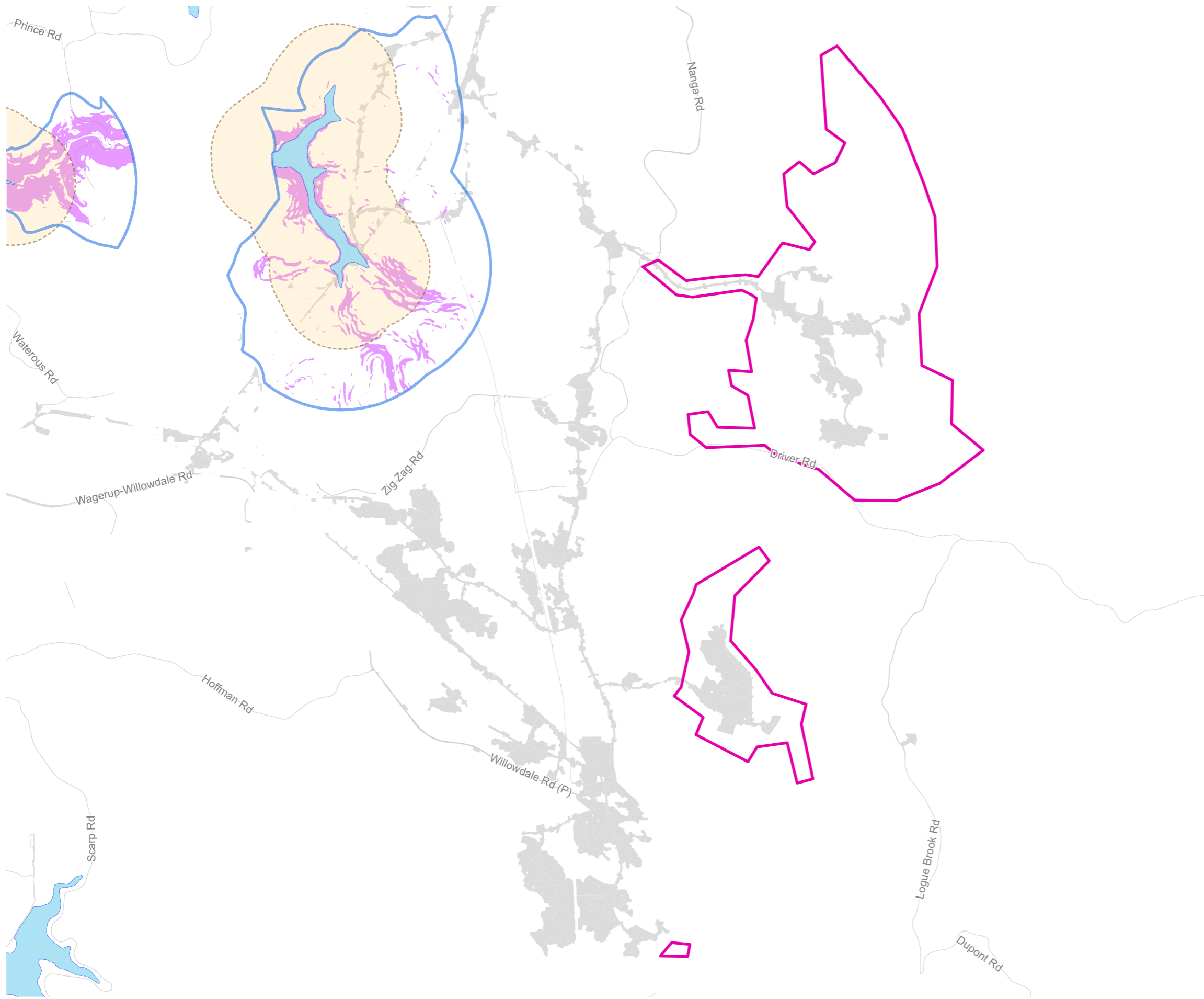




- Clearing
- Area Open
- Mine Disturbance Footprint
- Mt Solus 1.5km Buffer
- Serpentine Pipehead Dam Catchment
- Within 1km of Reservoir
- Reservoir Protection Zones (RPZ)
- Slope >16% (Landgate Derived)

**Huntly**  
01-10-2024 to 31-10-2024



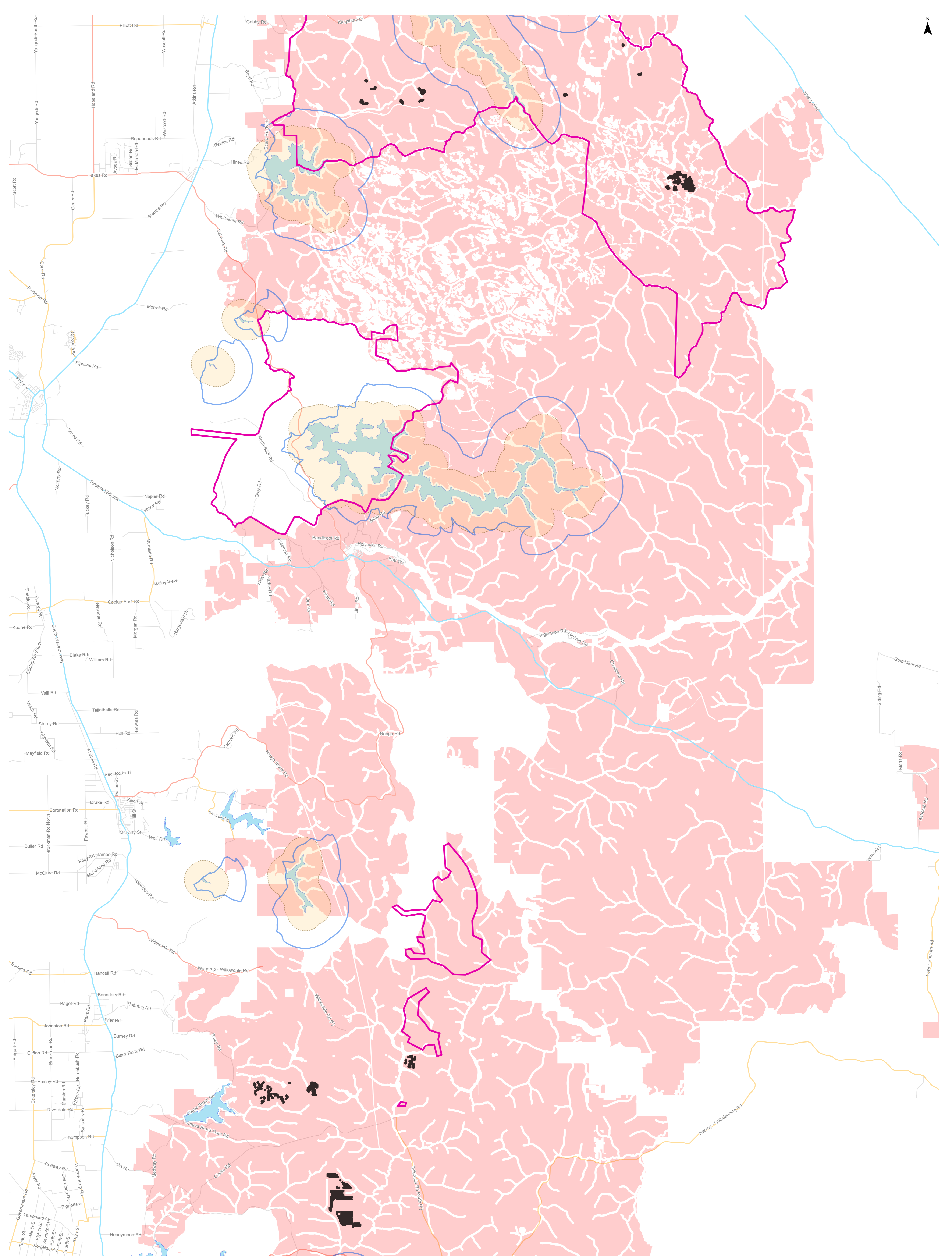


- Clearing
- Area Open
- Mine Disturbance Footprint
- Within 1km of Reservoir
- Reservoir Protection Zones (RPZ)
- Slope >16% (Landgate Derived)

**Willowdale**  
01-10-2024 to 31-10-2024

0 1 2 4  
Kilometres





- Exploration Drill Holes
- Exploration Disturbance Footprint
- Mine Footprint
- Within 1km of Reservoir
- Reservoir Protection Zones (RPZ)

**Exploration**  
01-10-2024 to 31-10-2024



Date Exported: 2024-11-04