

# **Environmental Protection (Darling Range Bauxite Mining Proposals) Exemption Order 2023**

**Alcoa Monthly Report**  
**Clause 10**

October 2025



# Monthly Reporting Dashboard – Page 1





## Section 10 Monitoring Potential Drainage Incidents

Turbidity Data		Drainage Incidents	
Site	No. Active Monitors <sup>1</sup>	Site	No. Events (Oct-25) <sup>2</sup>
Huntly	35	Huntly	1
Willowdale	4	Willowdale	0
<b>Total</b>	<b>39</b>	<b>Total</b>	<b>1</b>

<sup>1</sup> Refers only to monitors located in areas covered by the Exemption Order.

<sup>2</sup> Potential Events - Currently being investigated in accordance with section 6(2) of the Exemption Order to determine whether any of the events were mining related.

## Section 2 – Clause 10 2(c) (i) Production and Exploration Summary

Production (HUN and WDL)	Month (Oct-25)	YTD (CY)	Limit	Status
Production Tonnes Huntly	1.4	14.0		
Production Tonnes Willowdale	1.0	9.4		
<b>Total Bauxite Production Tonnes</b>	<b>2.4</b>	<b>23.4</b>	<b>38 MT</b>	
Exploration	Month (Oct-25)	YTD (CY)	Limit	Status
<b>Total Exploration Holes</b>	<b>9,252</b>	<b>56,322</b>	<b>105,000</b>	

### Legend



Within Limit



Approaching Limit



Above Limit

## Section 3 Clause 10 2(c) (i) and Clause 10 2(c) (iii) Activities Summary and Forecast

Area	October 2025			November 2025			December 2025		
	*Cleared	Stabilised	Seeded	*Clearing	Stabilised	Seeded	*Clearing	Stabilised	Seeded
<b>Huntly</b>									
<b>Total HUN Mine Disturbance Footprint (ha)</b>	<b>19.6</b>	<b>5.3</b>	<b>0</b>	<b>30</b>	<b>120.4</b>	<b>11.2</b>	<b>18</b>	<b>107.1</b>	<b>64.0</b>
<b>Willowdale</b>									
<b>Total WDL mine disturbance footprint (ha)</b>	<b>0</b>	<b>1.6</b>	<b>0</b>	<b>0</b>	<b>0</b>	<b>0</b>	<b>0</b>	<b>0</b>	<b>0</b>

### Definitions

- Cleared – disturbance to native vegetation and other flora
- Stabilised– in relation to an area that has been disturbed, means carry out landscaping, ripping and other appropriate operations to prevent erosion of sediment, promote infiltration and manage surface water runoff
- Seeded – landform established and seeding complete

\* Clearing only considers completed hectares

# Monthly Reporting Dashboard – Page 2

## Section 4 – Clause 2(c) (ii) Activities Ceased during the Period for Huntly

Area	October 2025		
	Haul Roads <sup>(a)</sup>	Infrastructure <sup>(b)</sup>	Mining
Within 1km Reservoir (ha)	0	0	0
Serpentine Pipehead Dam Catchment (ha)	0	0	0
Within RPZ and >16% average slope (ha)	0	0	0
Within 10m of BC nesting/significant trees (ha)	0	0	0

### Definitions

**(a)** Haul roads includes road infrastructure

**(b)** Infrastructure Includes drainage control, mining and monitoring infrastructure

Maps for Huntly

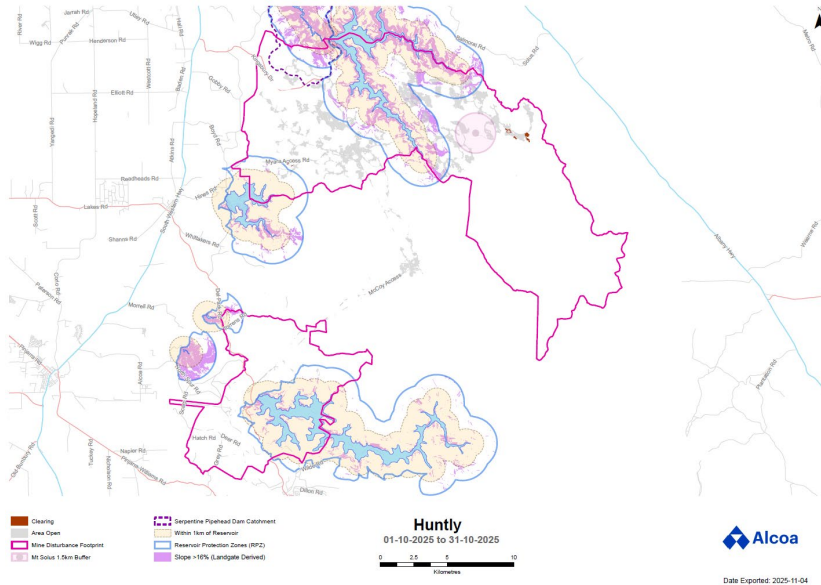
No cessation activities to report this month

Maps for Willowdale

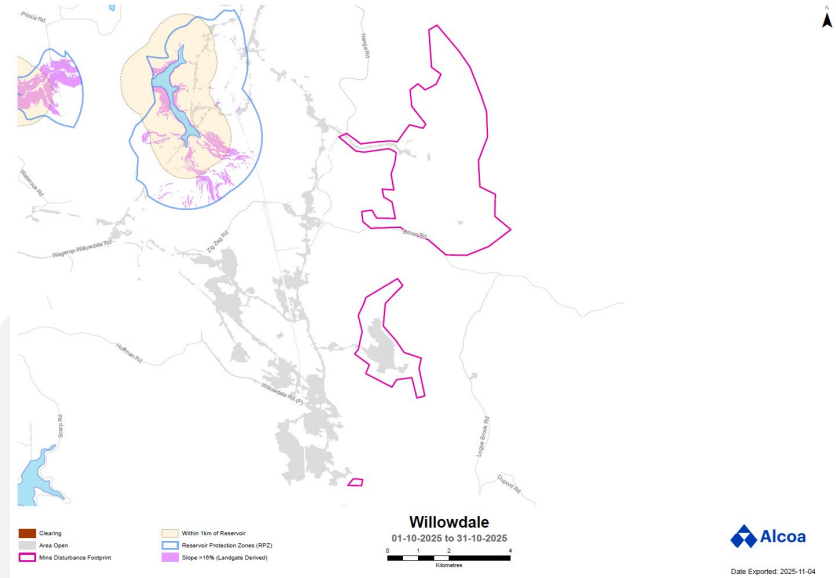
Cessation of mining activities in the above-mentioned areas is not applicable to the Willowdale mine

# Appendix A – Monitoring Results

## Huntly



## Willowdale



# Appendix A – Monitoring Results

## Exploration

