

Community Update

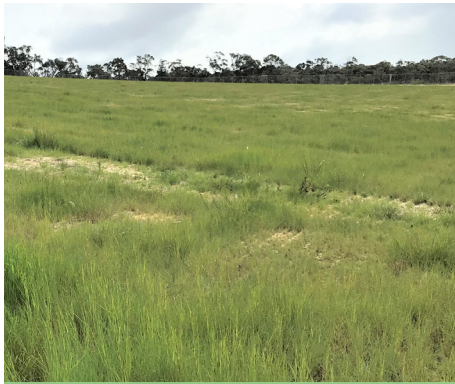
Anglesea



Welcome to Alcoa's regular community update, where we share the latest information about the Anglesea mine and power station including ongoing opportunities for the community to be engaged in our activities.

As the COVID-19 related restrictions begin to ease in regional Victoria, we remain committed to safeguarding our people and doing what we can to minimise any impact of COVID-19 and community.

With appropriate protocols in place, including a COVID-Safe Plan, face-coverings, social distancing and other protective actions aligned with best practice guidance, work is progressing safely onsite. Our community engagement continues online.



The native grasslands are establishing well.

Mine rehabilitation

Another significant mine rehabilitation milestone has been reached this month, with the hydroseeding of 53 hectares of native grasslands now complete.

Over the past five months specialised contractors have hydroseeded the southern mine slopes with a native wallaby grass seed mix. The grass is establishing very well and a weeding program has commenced to remove non-native weed species.

The native grasslands, together with the topsoil revegetation completed last year and new surface water drains, provide important erosion control on the re-profiled mine slopes, forming a safe, stable and sustainable landform.

Mine water filling strategy

Filling the mine void with water is a key enabler for both the Anglesea Mine Rehabilitation and Closure Plan and the Eden Project Anglesea concept.

As outlined in previous Community Updates, our current focus is the potential use of groundwater to commence the filling.

In May we applied to Southern Rural Water to conduct a 12-month pumping test of the Upper Eastern View Formation aquifer to further investigate this option and better inform the potential use of groundwater in the longer term. The application is under review by Southern Rural Water.

During the proposed pumping test a total of 1.5 gigalitres would be extracted and discharged into the former mine.

This amount represents less than half the historical annual extraction rate for the power station over the 46 years of operation and is significantly less than the current licence limit of 4 gigalitres per year.

You can read more about the proposed water filling strategy here: www.alcoa.com/australia/en/pdf/anglesea-fact-sheet-uevf-pumping-test-april-2020.pdf.

Coalmine Road relocation

The last stage of the Coalmine Road relocation works is now underway, with the final sealing of the road surface to be completed as soon as the weather allows.

The works, which are part of the rehabilitation to re-profile the mine's south wall, have included the construction of a new section of Coalmine Road, a new corner to integrate Coalmine Road and Messmate Track, and the sealing of 1.2 kilometres of road to required standards.

Upon completion of the works, management of the road will be transferred to the Surf Coast Shire Council who will determine its future use.

For ongoing information about Coalmine Road visit www.surfcoastshire.vic.gov.au/coalmineroad.

Power station remediation

Consistent with the EPA Victoria Clean Up Notice, an Environment Site Assessment (ESA) is currently being prepared for the former power station site.

Soil and groundwater sampling and analysis activities undertaken to date have identified no imminent or unacceptable risks to human health or the environment.

Earlier this month we sought an extension for the submission of the ESA to 31 March 2021 to complete the remaining investigative work and provide it to the EPA appointed auditor for review.

Keep informed

As always, should you have any feedback or questions for Alcoa please contact the Anglesea team via:

angleseaps@alcoa.com.au
or
www.alcoa.com.au/anglesea

Stay safe and well.

Warren Sharp,
Anglesea Site Asset Manager