

Huntly mine transition and Pinjarra refinery production increase

Supporting sustainable resource development in WA



Who we are and project background

Alcoa has been operating in Western Australia since 1963. Our Huntly and Willowdale mines send mined bauxite to our Pinjarra and Wagerup refineries where it's refined into alumina, the material used to make aluminium.

Aluminium plays a key role in decarbonisation. It's found in solar panels, wind turbines, electric vehicles, medical equipment and more. We continue to rely on it every day.

Project overview

The Huntly mine transition and Pinjarra refinery production increase project proposes to:

- transition Huntly Bauxite Mine to the Myara North and Holyoake regions and re-enter the O'Neil region.
- increase production at the Pinjarra refinery by 5% from 5.00 Mtpa to 5.25 Mtpa. The increase in production will be delivered through efficiency upgrades that enhance our operations.

The bauxite reserves in these mining regions are projected to sustain our refineries for up to 20 years, with the necessary clearing limited to a maximum of 7,500 hectares – less than one-third of the development envelope.

What's changed – and why

Since we first referred our proposal in 2020, we have made a number of changes in response to detailed studies and community and stakeholder feedback. These updates reflect our commitment to reducing potential impacts from the Project and delivering a proposal that balances environmental, social and operational considerations.

Creating space between operations and community

Created a 2,600-hectare mining avoidance zone to increase the distance between the Jarrahdale townsite and any future mining to more than 5km.

Supporting ongoing access to recreation

Adjusted the mine development envelope to avoid surrounding trails and recreational sites like the Bibbulmun Track, Wungong Campsite and Sullivan Rock Trail.

Re-aligned a section of the Munda Biddi Trail to ensure it remains open throughout the life of mine.

Protecting valued places

Maintained public access to areas with high social value like the Italian Prisoner of War Camp and Inglehope Arboretum.

Removed the need for mine infrastructure to cross key public routes, including Albany Highway, Kingsbury Drive, Jarrahdale Road, Pinjarra–Williams Road and the Bibbulmun Track.

Supporting local jobs

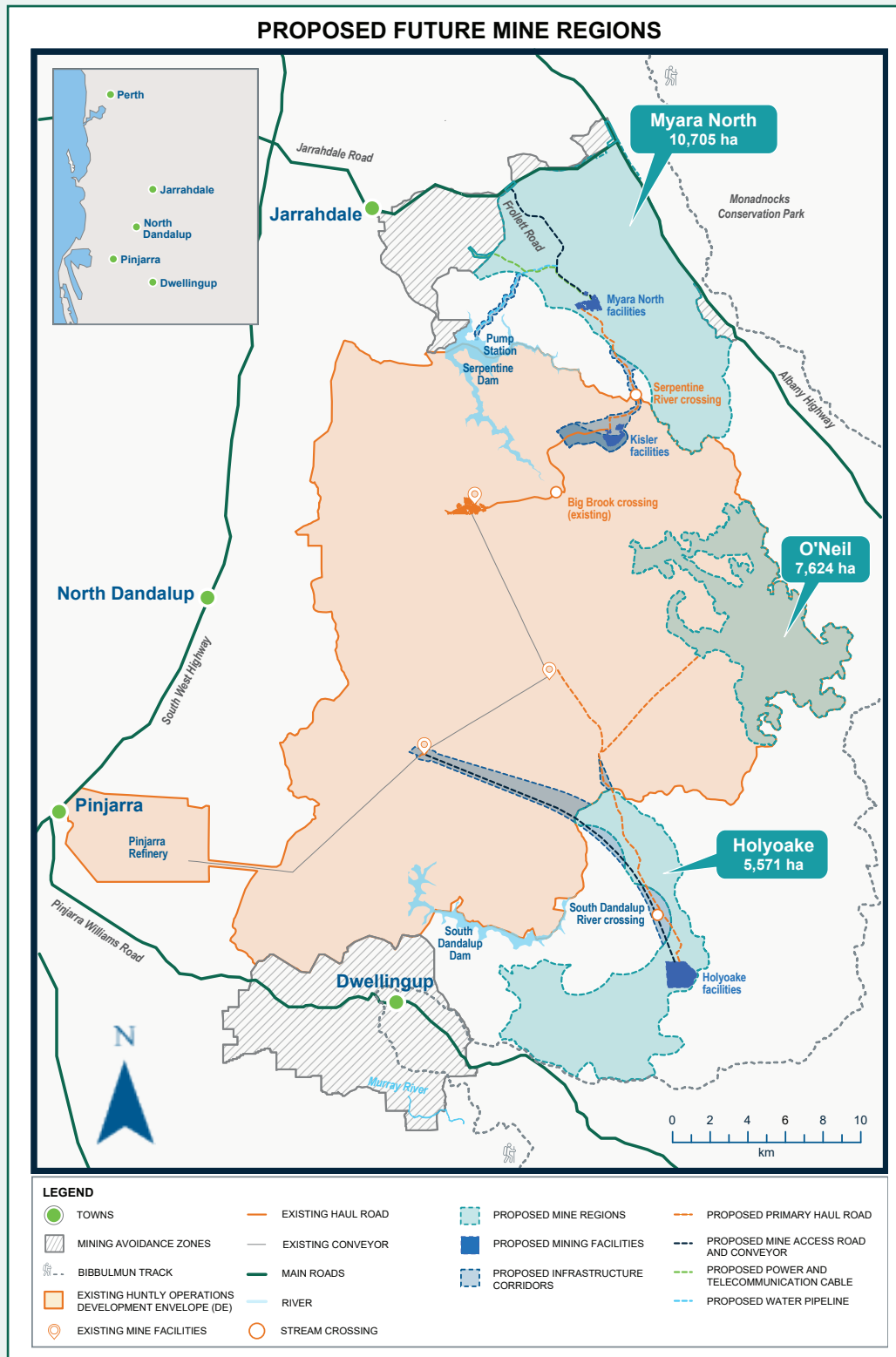
Removed the option to export bauxite as part of this proposal. All mined bauxite will be refined locally in Western Australia, supporting local jobs and strengthening the economy.

Assessment Footprint

The assessment is across three development envelopes totalling 23,900 hectares, however clearing will be limited to 7,500 hectares – less than a third of the total development envelope.

In addition, we have established avoidance zones across the proposed project area where mining will not occur.

Over 170km of seasonal streams will retain habitat, protect fauna and provide important linkages across the development envelopes.



New Infrastructure

In order to connect the new mine regions to the existing infrastructure a range of new mine access roads, haul roads, mine facilities and conveyors will be built as shown on the map.

These have been carefully planned and positioned to connect to existing infrastructure where possible.

We're continuing to engage

We know that people care deeply about the areas where we operate. That's why we're committed to transparent communication, ongoing consultation and continuous improvement throughout the life of the project.

Further information is available via our website, local information sessions and our local pop-up offices in Jarrahdale and Dwellingup. We welcome stakeholder and community comments. During this public comment period, comments can be made through the EPA's Public Consultation Hub at consultation.epa.wa.gov.au



Stay informed. Scan the QR code using your phone camera, visit our website www.alcoa.com/australia or contact us via alcoaofaustralia@alcoa.com or (08) 9316 5817.

This information is available in other languages upon request.